

# PRODUCT DATA SHEET



water  
treatment  
services

## Pureline Pure 3 ClO<sub>2</sub> Generator

Chemistry to make water work

### OVERVIEW

The Pure 3 Chlorine Dioxide (ClO<sub>2</sub>) generator line from PureLine combines affordability with optimal efficiency and safety. Utilising three precursors (sodium chlorite, sodium hypochlorite, and hydrochloric acid), the Pure 3 system gives our customers the best in safe, high efficiency production of low to medium volumes of ClO<sub>2</sub>. With low maintenance cost and reliable operation, the Pure 3 system can be built with a simple frame configuration or with a fully enclosed cabinet.

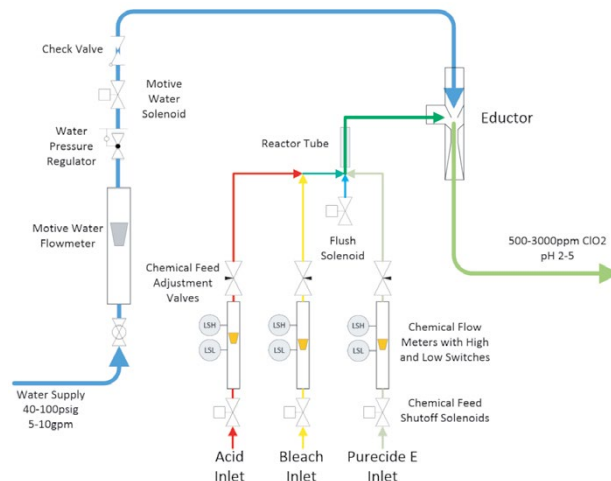
Capable of multiple dosing methods (flow, residual, timer, etc), these generators can be configured to offer remote monitoring and production tracking. Producing ClO<sub>2</sub> on demand, there is no need for bulk storage of solution. An inherently safe design with multiple safety interlocks.

- Affordable, high efficiency system.
- Low maintenance cost.
- Enhanced monitoring and control capabilities.
- Multiple safety interlocks.
- Enhanced chemical feed control to maximize efficiency and safety.
- Broad production range (<0.5kg to > 45 kg per day)



### STANDARD SPECIFICATIONS

Parameter	Units	PureLine 3 Model
ClO <sub>2</sub> Output Capacity	kg/day	0.5kg to 45 kg
Electricity requirement		220VAC 1ph 30A service (60A for larger units requiring a ClO <sub>2</sub> pump)
Inlet water		20 Mesh filtered water. >350 kPa (with less than 70 kPa variability) 19L/min - 114L/min depending on capacity
PLC & HMI		Programmable Relay (Optional PLC and HMI) • Alarm / Run Status / Remote Start / Stop / Manual Controls
Chemical usage		<ul style="list-style-type: none"> <li>• Purecide E — 4.65 kg/kg ClO<sub>2</sub></li> <li>• 15% HCl — 4.7 kg/kg ClO<sub>2</sub></li> <li>• 15% NaOCl — 3.7 kg/kg ClO<sub>2</sub></li> </ul>
Cabinet		White Polypropylene 3 compartment (generator, electrical and acid pump)
Dimensions (WxDxH)	mm	Base Model 965 x 407 x 1067
Weight	kg	34
Co-products		<ul style="list-style-type: none"> <li>- Salt (NaCl ~1.5 kg/kg ClO<sub>2</sub>)</li> <li>- Excess HCl &lt;1 kg/kg ClO<sub>2</sub></li> </ul>



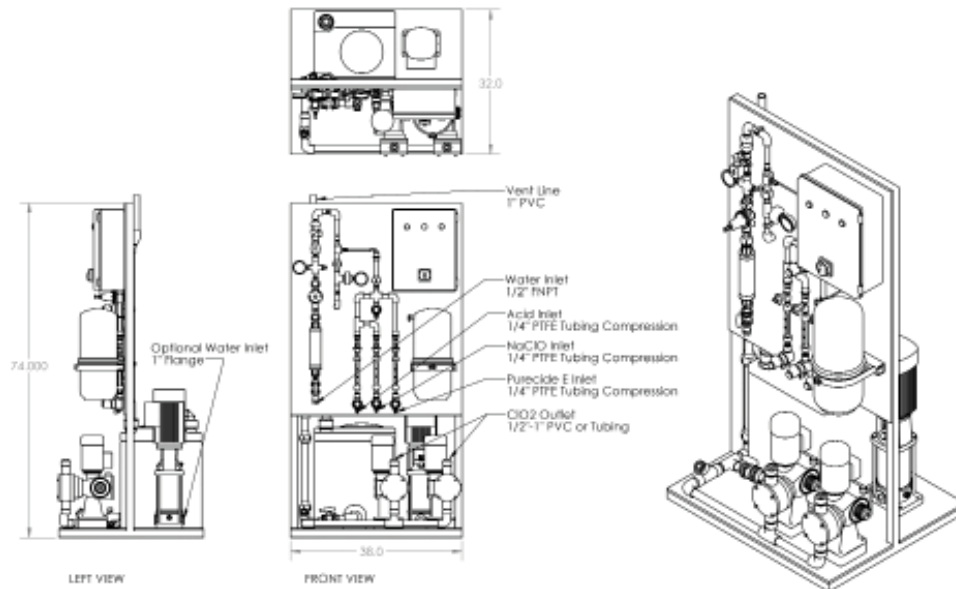
SEPT 2023

# STANDARD INCLUSIONS + OPTIONS

✓ = Standard Supply    ○ = Optional Supply

Equipment	
Self contained unit	✓
ClO <sub>2</sub> injection pumps	○
Input chemical storage tanks	○
Produced ClO <sub>2</sub> break tank	○
Board mount	✓
Cabinet mount	○
PCA analyser	○

Instrumentation & Controls	
Control Panel compliant with AS/NZS 3000, IP55	✓
PLC control system with HMI touch screen	✓
Full redundancy PLC control system	○
Flow pacing capability utilising external flowmeter signal)	✓
Water flow meter	○
Production tracking and remote system monitoring	○
PCA-970 Chlorine Dioxide Residual Monitoring System	○



## MODEL SELECTION

- L** Low-volume
- H** High-volume
- B** Board mounted (standard)
- C** Cabinet mounted (optional)
- X** ClO<sub>2</sub> batch tank - without
- C** ClO<sub>2</sub> batch tank - with
- X** ClO<sub>2</sub> injection pump - without
- C** ClO<sub>2</sub> injection pump - with
- X** Specification – standard
- C** Specification – custom

P3- \_ \_ \_ \_ \_

**NEED A QUOTE?**  
**COMPLETE THIS TABLE**  
**AND EMAIL TO...**  
[enquiry@watertreat.com.au](mailto:enquiry@watertreat.com.au)

**Disclaimer:** WTS is continuously updating and improving its products and services, so please contact us for more detailed information or to confirm specifications. WTS takes no responsibility for any errors resulting from the use of information contained within this document.

SEPT 2023